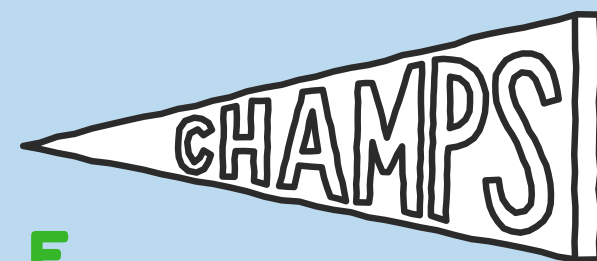
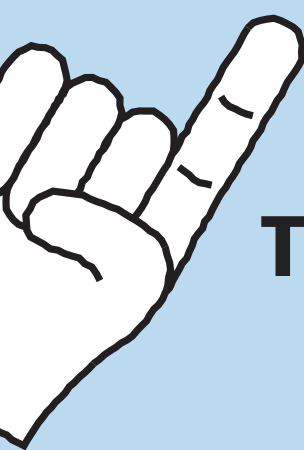


**The 11+ Experts in Poole & Bournemouth**

# **11+ APPLICATION PROCESS EXPLAINED**



THERE ARE ONE SET OF SELECTION 11 + TESTS FOR **POOLE GRAMMAR SCHOOL, BOURNEMOUTH SCHOOL, BOURNEMOUTH SCHOOL FOR GIRLS AND PARKSTONE GRAMMAR SCHOOL** (THE 'CONSORTIUM'). THIS MEANS THAT APPLICANTS WHO WISH TO BE CONSIDERED FOR ADMISSION TO MORE THAN ONE SELECTIVE SCHOOL, IN THE CONSORTIUM, WILL ONLY HAVE TO TAKE ONE TEST.

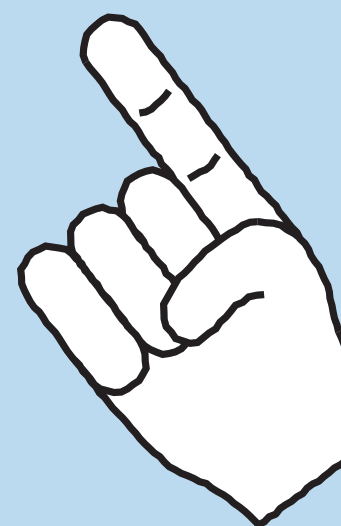


**The 11+ test will take place on Saturday 22nd of September 2018.**

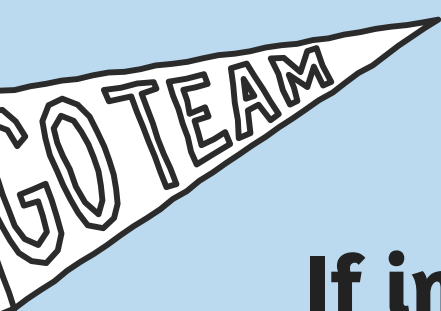
AN ONLINE REGISTRATION FORM CAN BE FOUND NOW ON ANY OF THE FOUR SCHOOLS' WEBSITES. THE FORM IS THE SAME WITH EACH SCHOOL AND PROVIDES THE OPTION TO TAKE THE TEST AT EITHER OF THE BOYS' SCHOOLS OR EITHER OF THE GIRLS' SCHOOLS. DEADLINE FOR THE FORM IS THE 7 SEPTEMBER 2018.

THE TEST WILL BE TAKEN AT YOUR CHOSEN SCHOOL.

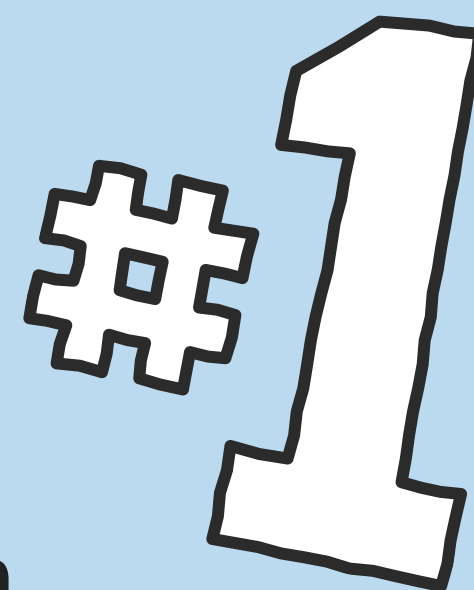
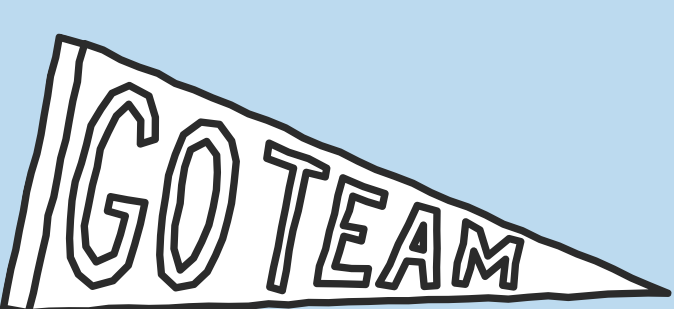
APPLICANTS WILL BE CONSIDERED FOR ENTRY TO BOTH GRAMMAR SCHOOLS DEPENDING ON THEIR SCORE AND WHETHER YOU SELECTED THIS OPTION ON THE REGISTRATION FORM. RESULTS OF TESTS WILL BE POSTED, BY FIRST CLASS POST, ON THE 12TH OF OCTOBER.



PARENTS WILL THEN NEED TO MAKE A FORMAL APPLICATION USING THE COMMON APPLICATION FORM THROUGH THEIR LOCAL AUTHORITY, WHICH MUST BE RECEIVED BY 31ST OCTOBER 2018.

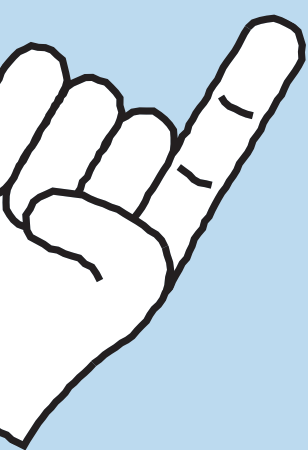
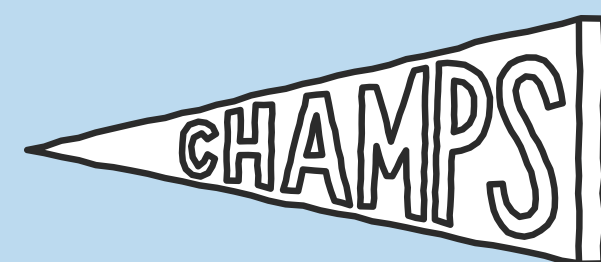


**If in doubt, check the schools admissions policy or call your chosen school, who will be able to answer any questions not covered on their website.**



**The 11+ Experts in Poole & Bournemouth**

# **A NOTE ON ACCESS ARRANGEMENTS IN THE 11+ APPLICATION PROCESS**



---

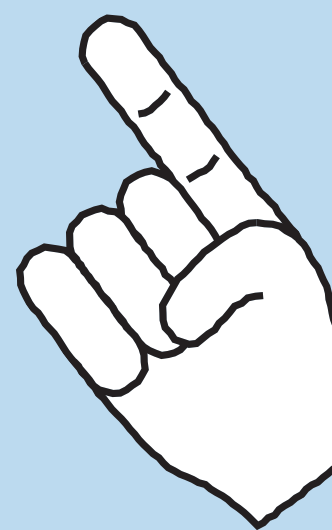
**IF YOUR CHILD HAD A SPECIAL EDUCATIONAL NEED, A  
DISABILITY OR IS IN RECEIPT OF AN EDUCATION HEALTH CARE  
PLAN, YOU SHOULD COMPLETE THE APPLICATION FOR ACCESS  
FORM.**

---

**THIS WILL NEED TO CONTAIN THE RELEVANT EVIDENCE AND BE  
RETURNED, TO THE SCHOOL YOU HAVE CHOSEN FOR YOUR  
CHILD TO SIT THE EXAM, FOR THE ATTENTION OF THE  
'ADMISSIONS REGISTRAR' BY 10TH SEPTEMBER 2018.**

---

**ALL DOCUMENTATION CAN BE FOUND ON THE APPLICATION  
SECTION OF EACH SCHOOLS' WEBSITES.**



---

**If in doubt, or you are unsure about the evidence needed, please  
speak to the SENCO ( Special Educational Needs Co-Ordinator) at  
your child's current school.**

---

